



***District Policing  
Partnerships***

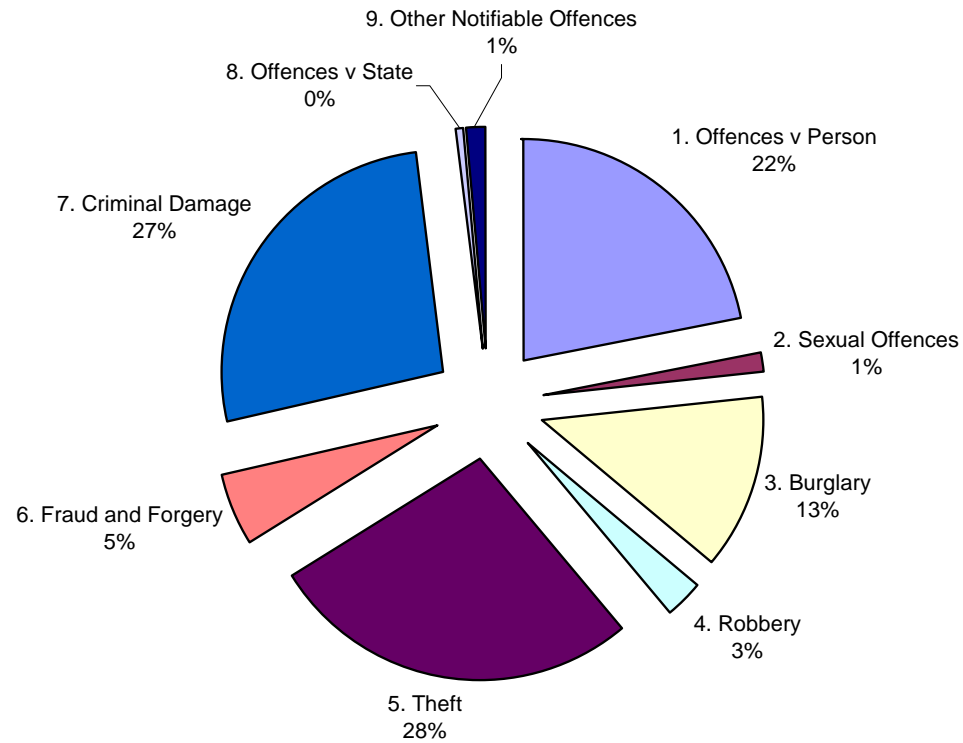
*Local people shaping local policing*

# **Tackling Crime Newtownabbey District Command Unit**








**District Policing Partnerships Brief  
1<sup>st</sup> October 2004 – 31<sup>st</sup> March 2005**

# Newtownabbey District Policing Partnership Brief

## Crime in Newtownabbey 01 October 2004- 31 March 2005



## Newtownabbey District Policing Partnership Brief

Crime types	Crimes this period	Comparison on the same period last year
Theft	668	1020 35% decrease (-352) 
Criminal Damage	657	746 12% decrease (-89) 
Offences V Person	540	535 0.93% increase (+5) 
Burglary	316	446 29% decrease (-130) 
Fraud & Forgery	135	109 24% increase (+26) 
Robbery	65	54 20% increase (+11) 
Sexual Offences	36	37 2.7% decrease (-1) 

## **Newtownabbey District Policing Partnership Brief**

### **DCU Performance against Policing Plan crime targets**

**Overall crime: Overall crime recorded from the 1<sup>st</sup> October 2004 –31<sup>st</sup> March 2005 was 2463. This is an 18% (-534) reduction on the same period the previous year when the figure was 2997.**

**Domestic burglaries: (To reduce the number of domestic burglaries by 2% compared to base year 2001/2002) There were 190 domestic burglaries from 1<sup>st</sup> October 2004 –31<sup>st</sup> March 2005. In the same period the previous year there were 250. This equates to a 24% (-60) reduction on the previous year and 15.2% reduction on the base year 2001/2002.**

**Vehicle Crime: (To reduce the number of vehicle crimes by 8% compared to the base year 2001/2002) There were 182 Vehicle crimes reported between 1<sup>st</sup> October 2004 –31<sup>st</sup> March 2005. In the same period in the previous year there were 462 vehicle crimes reported, a 61 % (-280) decrease. A 49.9% reduction was made on the base line year 2001/2002.**

**Violent Crime: (To achieve a clearance rate for violent crimes of 55%) The Detection rate for violent crime this period is 42.9%. This is a decrease on the same period last year when the detection rate stood at 51.9%**

#### **Domestic Violence:**

- (1. To report the number of Domestic Incidents and domestic Violence Offences in Newtownabbey DCU.**
- 2. To monitor the number of domestic violence offences that result in persons reported or charged.**
- 3. To report the number of domestic violence referrals to the Director of Public Prosecutions where the victim has declined to prosecute.)**

## **Newtownabbey District Policing Partnership Brief**

**There were 403 domestic incidents reported between 01st Oct 2004 - 31<sup>st</sup> March 2005, of these, 190 involved violence. During this period 34 persons were charged / summonsed for offences relating to domestic violence. 1 report was sent to the DPP where the victim declined to prosecute in this time period.**

### **Roads Policing Detections 2004/05 compared to 2003/04:**

**Excess Speed: The number of detections for excess speed during 2004/05 was 95 compared to 139 for the previous year. This is a 32% (-44) reduction**

**Drink/drug driving: The number of detections in 2004/05 is 55 compared to 168 last year. This is a 67% (-113) reduction in detections.**

**Non-wearing of seatbelts: There have been 218 detections for the non-wearing of seat belts this year compared to 73 for the same period last year. This is a 199% (+145) increase in detections.**

**Detections for Careless /Dangerous Driving: There have been 165 detections this year compared to 41 last year. This is a 302% (+124) increase in detections.**

## Newtownabbey District Policing Partnership Brief

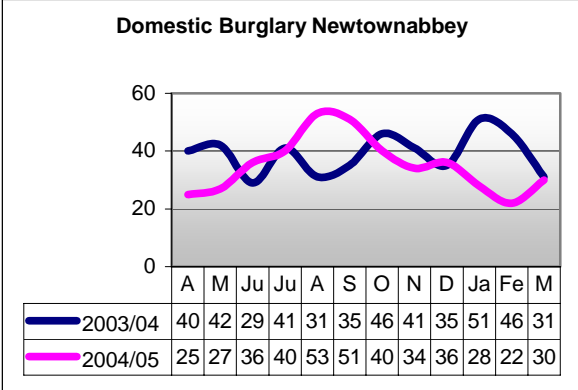
In 2004/05 there were 31 persons killed/seriously injured in Newtownabbey DCU compared to 37 in 2003/04. This is a reduction of 16% (-6)

Sickness Levels: Average working days lost 2004/5 financial year.

	2003/2004	2004/2005
Police Newtownabbey	13.41	12.49
Civilian Newtownabbey	21.36	19.47
Police Urban	18.74	16.09
Civilian Urban	15.28	19.13

# Newtownabbey District Policing Partnership Brief

## Policing Plan Crime Targets

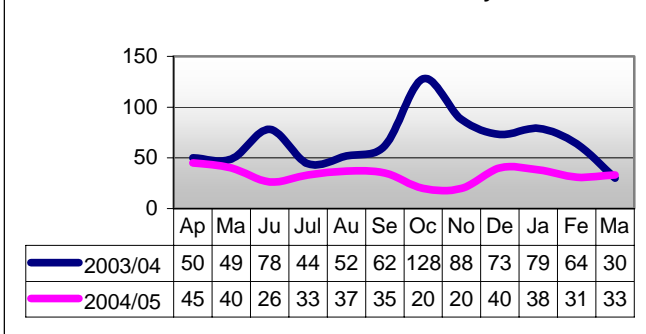
THE PROBLEM	THE INITIATIVES	THE IMPACT																																							
<p style="text-align: center;"><b>Domestic burglary</b></p>  <p style="text-align: center;">Domestic Burglary Newtownabbey</p> <table border="1" data-bbox="197 686 728 758"> <thead> <tr> <th></th> <th>A</th> <th>M</th> <th>Ju</th> <th>Ju</th> <th>A</th> <th>S</th> <th>O</th> <th>N</th> <th>D</th> <th>Ja</th> <th>Fe</th> <th>M</th> </tr> </thead> <tbody> <tr> <td>2003/04</td> <td>40</td> <td>42</td> <td>29</td> <td>41</td> <td>31</td> <td>35</td> <td>46</td> <td>41</td> <td>35</td> <td>51</td> <td>46</td> <td>31</td> </tr> <tr> <td>2004/05</td> <td>25</td> <td>27</td> <td>36</td> <td>40</td> <td>53</td> <td>51</td> <td>40</td> <td>34</td> <td>36</td> <td>28</td> <td>22</td> <td>30</td> </tr> </tbody> </table> <p>Domestic burglary occurs across the DCU but particularly the Jordanstown and Glengormley areas, which have been worst affected in this period.</p> <p>The volume of domestic burglary decreased in the last six months of 04/05. In this period (Oct 04-Mar 05) there were 190 domestic burglaries compared to 250 in the same period the previous year.</p> <p>The Policing plan target for 2004/05 was to reduce the number of domestic burglaries by 2% (based on</p>		A	M	Ju	Ju	A	S	O	N	D	Ja	Fe	M	2003/04	40	42	29	41	31	35	46	41	35	51	46	31	2004/05	25	27	36	40	53	51	40	34	36	28	22	30	<p>In this period a pro-active bail check strategy has been put in place within the DCU. Hotspot areas and times regarding domestic burglaries are identified in the Tactical Assessments.</p> <p>Officers are briefed on these at the fortnightly TTCG meetings and can further access this report via the on-line briefing pages.</p> <p>High visibility patrolling/ VCPs were carried out in identified hotspots at peak times.</p> <p>The Volume Crime Unit consisting of 2 full time detective constables and 1 full time uniformed constable and 1 video identification officer has been put in place.</p> <p>All victims of domestic burglary are issued with letters offering them the opportunity of having a free domestic survey conducted by the Crime Prevention Officer. Smartwater kits continue to be offered to every victim</p>	<p>This has led to the arrest or disruption of known burglars in the area. This strategy has made a positive impact on levels of domestic burglary and will continue to run.</p> <p>Officers have a good knowledge of where and when domestic burglaries take place and are able to act accordingly by patrolling hotspot areas.</p> <p>So far 19 persons have been dealt with in relation to burglary, resulting in 8 persons being charged with burglary related offences.</p> <p>Fingerprint/DNA hits are now being followed up and actioned more effectively. The Intelligence Unit also researches MO and compiles a list of similar type crimes so that on interview, the suspect</p>
	A	M	Ju	Ju	A	S	O	N	D	Ja	Fe	M																													
2003/04	40	42	29	41	31	35	46	41	35	51	46	31																													
2004/05	25	27	36	40	53	51	40	34	36	28	22	30																													

## Newtownabbey District Policing Partnership Brief

<p>the baseline year 2001/02). The DCU has exceeded this target and has made a reduction of 15.2%.</p>	<p>of domestic burglary in the DCU. News Releases are distributed to local press on a weekly basis highlighting burglary trends and giving crime prevention advice. A leaflet drop was carried out in the Jordanstown area warning residents of the creeper burglary problem in their area.</p> <p>Identification and targeting of prolific offenders.</p> <p>CPO has given 13 presentations on general crime prevention advice focusing on “Bogus callers” and distraction burglaries to Senior Citizen groups.</p>	<p>can be further questioned regarding other crimes.</p> <p>60 less domestic burglaries in Oct 04-Mar 05 compared to the same period the previous year.</p>
<p><b>THE PROBLEM</b></p>	<p><b>THE INITATIVES</b></p>	<p><b>THE IMPACT</b></p>
<p><b>Vehicle Crime</b></p>	<p>Although vehicle crime has continued to remain low in this period, any emerging vehicle crime trends or hotspots have been identified in the Tactical Assessment and historical hotspots continue to be subject to high visibility patrolling to prevent this type of crime. High</p>	<p>These regular high visibility patrols have acted as a deterrent for vehicle crime in this historical hotspot area. Levels have remained consistently low in comparison to previous years.</p>

## Newtownabbey District Policing Partnership Brief

Vehicle Crime in Newtownabbey



The volume of vehicle crime decreased in the last six months of 04/05. In this period (Oct 04-Mar 05) there were 182 vehicle crimes compared to 462 in the same period the previous year. This is a decrease of 61%.

The Policing plan target for 2004/05 was to reduce the number of Vehicle crimes by 8% (based on the baseline year 2001/02). The DCU has exceeded this target and has made a reduction of 49.9%.

visibility patrolling in relation to domestic burglaries in the DCU has also had an impact on vehicle crimes in the area.

Farm Watch continued to run in Ballyclare sector. This was a multi-agency initiative introduced by Ballyclare sector personnel to combat theft from farms including vehicles and machinery. Various agencies attended and discussed anti-theft products. The sector inspector also gave a presentation on crime prevention in rural areas.

The DCU continues to use bicycles for anti-vehicle crime patrols in identified hotspots across the DCU including shopping centres and car parks.

The volume crime units dealt with 6 persons in relation to vehicle crime, of these 5 were charged/reported as a result of fingerprint/ DNA hits.

Operation Habit was put in place across the DCU whereby police post a letter to persons who have left their property unsecured.

This event had a good attendance including members of the DPP and received positive media coverage and was generally well received by the community.

Positive feedback was received from retailers and members of the public in the areas where the bicycles were used.

280 less vehicle crimes in Oct 04 – Mar 05 compared with the same period the previous year.

## Newtownabbey District Policing Partnership Brief

**Continued liaison with Car parks in the DCU in relation to vehicle crime prevention initiatives.**

**A Theft from Vehicle poster campaign was launched in the DCU, 22 bus shelter advertisements warning of thefts from vehicles were placed in hotspot areas.**

## Newtownabbey District Policing Partnership Brief

<b>THE PROBLEM</b>	<b>THE INITIATIVES</b>	<b>THE IMPACT</b>
<p><b>Drugs</b> Figures relate to 2004/05 full year.</p>	<p><b>Drugs awareness programme delivered to schools.</b></p> <p><b>The PPU carried out 71 intelligence led proactive anti drug operations in this financial year.</b></p> <p><b>Incorporation of drugs in to local policing plan in a bid to increase the effectiveness of locally initiated intelligence led proactive anti drugs operations.</b></p>	<p><b>45 Seizures of illicit drugs were made.</b> <b>38 persons were Arrested/ charged in relation to drug offences.</b></p>

## Newtownabbey District Policing Partnership Brief

THE PROBLEM	THE INITIATIVES	THE IMPACT
<p><b>Violent Crime</b>                      The Policing plan target for 2004/05 was to achieve a clearance rate for violent crimes of 55%. The DCU has currently a clearance rate of 43% according to the most up to date figures, which cut off on 20 March 2005.</p>	<p>The DCU continues to detail a High Visibility public order patrol every Friday and Saturday night. This consists of a minimum of 5 officers and concentrates on Glengormley in the early evenings and Ballyclare at pub closing times.</p> <p>There were 30 reports of indecent exposure in Newtownabbey between 07/04/04 to 04/02/05. The Analyst carried out a Comparative Case Analysis report; the objective being to link indecent exposure incidents that otherwise may have been left unrelated.</p> <p>Robbery saw a sharp increase in this period, rising by 75%, from 36 to 63 on the previous six months. An MO was identified and a joint operation made of TSG, PPU and CID was put in place, targeting the businesses most at risk.</p> <p>The DCU has been working closely with the Community Safety Partnership, Local Strategy</p>	<p>No major public order incidents have taken place in these areas.</p> <p>A male was arrested in North Belfast DCU fitting our identified description who also lived in the area identified in the Analyst's report. He was subsequently identified as being involved in a number of indecent exposure incidents and an indecent assault in North Belfast DCU. From this we have been able to identify 23 IPs from Newtownabbey DCU who will attend an identity parade.</p> <p>This operation lasted over a month and in the time frame no robberies took place, few robberies following the identified MO have occurred in the DCU since.</p>

## Newtownabbey District Policing Partnership Brief

**Partnership and NIO Community Safety Unit to progress the installation of CCTV cameras have now been put in place in Glengormley. CCTV evidence will be used to detect and charge those engaged in public disorder, as well as acting as a useful preventative measure.**

**The Analyst has been tasked to carry out a problem profile on the effect these cameras have had on crime levels in the Glengormley area.**

## Newtownabbey District Policing Partnership Brief

THE PROBLEM	THE INITIATIVES	THE IMPACT																										
<p style="text-align: center;"><b>Youths Causing Annoyance</b></p> <div style="text-align: center;"> <table border="1" style="margin: 10px auto; border-collapse: collapse;"> <thead> <tr> <th></th> <th>Apr</th> <th>Ma</th> <th>Jun</th> <th>Jul</th> <th>Au</th> <th>Se</th> <th>Oct</th> <th>Nov</th> <th>De</th> <th>Jan</th> <th>Feb</th> <th>Mar</th> </tr> </thead> <tbody> <tr> <td>2004/05</td> <td>332</td> <td>275</td> <td>185</td> <td>239</td> <td>299</td> <td>209</td> <td>267</td> <td>163</td> <td>165</td> <td>187</td> <td>178</td> <td>245</td> </tr> </tbody> </table> <p style="text-align: center;">Month</p> </div> <p><b>Youths causing annoyance has been the main local priority in Newtownabbey DCU since April 2004. Our aim is to reduce the level of YCA reports across the DCU from the start of the year. There has been a 22% decrease in YCA reports from 01 April 04-30 Sep 04 to 01 Oct 04 – 31Mar 05.</b></p>		Apr	Ma	Jun	Jul	Au	Se	Oct	Nov	De	Jan	Feb	Mar	2004/05	332	275	185	239	299	209	267	163	165	187	178	245	<p><b>There have been 58 taskings directed at YCA in the period 01 Oct 04 – 31Mar 05.</b></p> <p><b>Hotspots are continually monitored and reported upon in the Tactical Assessments.</b></p> <p><b>Targeted operations were put in place in a bid to seize alcohol from underage drinkers.</b></p> <p><b>Instructions have been issued across the DCU to reiterate the importance of making referrals to the YDO. Local systems have been put in place to make sure this is implemented.</b></p>	<p><b>There has been a 22% decrease in YCA reports from 01 April 04-30 Sep 04 to 01 Oct 04 – 31Mar 05.</b></p> <p><b>From 01 Oct 04- 31 Mar 05, 266 Small bottles, 224 Tins and 95 Large bottles of Alcohol were seized.</b></p> <p><b>System now established to identify repeat offenders.</b></p>
	Apr	Ma	Jun	Jul	Au	Se	Oct	Nov	De	Jan	Feb	Mar																
2004/05	332	275	185	239	299	209	267	163	165	187	178	245																

## Newtownabbey District Policing Partnership Brief

**Table showing Notifiable Offences recorded and percentage Cleared by Class of Crime – Newtownabbey DCU:**

**FYTD 01 April 2004 - 31 Mar 2005**

	FYTD Recorded	PFYTD Recorded	% Change Recorded	FYTD Cleared	PFYTD Cleared	% Change Cleared	% Cleared FYTD	% Cleared PFYTD
1. OFFENCE V PERSON	1093	1126	-2.93%	521	628	-17.04%	47.7%	55.77%
2. SEXUAL OFFENCES	97	61	59.02%	20	26	-23.08%	20.6%	42.62%
3. BURGLARY	771	862	-10.56%	60	59	1.69%	7.8%	6.84%
Domestic Burglary	423	468	-9.62%	30	30	0.00%	7.1%	6.41%
4. ROBBERY	101	115	-12.17%	13	22	-40.91%	12.9%	19.13%
5. THEFT	1350	1981	-31.85%	238	366	-34.97%	17.6%	18.48%
VEHICLE CRIME *	399	797	-49.94%	38	120	-68.33%	9.5%	15.06%
6. FRAUD AND FORGERY	270	428	-36.92%	52	68	-23.53%	19.3%	15.89%
7. CRIMINAL DAMAGE	1495	1576	-5.14%	143	151	-5.30%	9.6%	9.58%
8. OFFENCES V STATE	33	34	-2.94%	19	10	90.00%	57.6%	29.41%
9. OTHER NOTIFIABLE OFF	65	76	-14.47%	50	54	-7.41%	76.9%	71.05%
DRUG TRAFFICKING	8	15	-46.67%	7	12	-41.67%	87.5%	80.00%
DRUGS NON-TRAFFICKING	44	51	-13.73%	30	39	-23.08%	68.2%	76.47%
TOTAL DRUG OFFENCES	52	66	-21.21%	37	51	-27.45%	71.2%	77.27%
TOTAL ALL CLASSES	5275	6259	-15.72%	1116	1384	-19.36%	21.2%	22.11%
TOTAL VIOLENT CRIMES (1,2 &	1291	1302	-0.84%	554	676	-18.05%	42.9%	51.92%
TOTAL PROPERTY CRIME (3,5 &	3616	4419	-18.17%	441	576	-23.44%	12.2%	13.03%