



*Limavady*

*District Policing  
Partnership*

Local people shaping local policing

**REPORT**

**ON THE PUBLIC CONSULTATION EXERCISE  
BY LIMAVADY DISTRICT POLICING PARTNERSHIP  
ON POLICING, POLICING ISSUES AND POLICING PRIORITIES**

**REPORT TO BE GIVEN CONSIDERATION  
BY THE DISTRICT COMMAND UNIT  
IN THE FORMULATION OF THE LOCAL POLICING PLAN 2008-2011  
AND IN ADDRESSING THE PUBLIC CONCERNS RE POLICING**

**“...the function ... should be advisory, explanatory and consultative. They should represent the consumer, voice the concerns of the citizens and monitor the performance of the police in their districts .... The DPPs should be encouraged to see policing in its widest sense, involving and consulting non-government organisations and community groups concerned with safety issues as well as statutory agencies”**

**“The views expressed by the District Policing Partnership Boards should be taken fully into account by the police and by the Policing Board in the formulation of policing plans and strategies”**

**The Report on the Independent Commission  
on Policing for Northern Ireland  
September 1999**

**(3) Before issuing or revising a local policing plan, the district commander shall consult the district policing partnership whose district is, or includes, the police district and take account of any views expressed.**

**Section 22 The Police (NI) Act 2000**

# Contents

Contents.....	
Executive Summary	
1. Background.....	
1.1. Role of the District Policing Partnership .....	
1.2. Demographics .....	
1.3 Environmental Scan .....	
2. Methodology .....	
3. Key Outcomes from key stakeholders.....	
3.1. Crime Analysis.....	
3.3. Questionnaires .....	
3.4. Youth Council .....	
3.5. Faith Sector .....	
3.6. Safer Roads Consultation.....	
3.9. Other stakeholder meetings .....	
3.10. Questions from the public.....	
3.11. Phone calls and visitors to DPP Office .....	
3.12. Questions/discussion between the DPP and the police .....	
4. Tabulation of outcomes.....	
5. Conclusion .....	
Appendix A Setting the context:.....	

## **Executive Summary**

In order to assist with identifying local policing issues the Limavady District Policing Partnership developed a process to establish policing priorities. This was based on quantitative and qualitative research, using both a structured and a semi-structured process.

Information consisted of an analysis of local crime figures, consultation through questionnaires, analysis of questions submitted by the public, DPP input, meetings with key stakeholders and focus groups.

In the development of policing issues and priorities, it is acknowledged that some issues which have been identified will not be included in the district policing plan, but are identified as issues which should be considered at corporate level (both PSNI and NIPB) and acted upon, or where appropriate lobbied for.

### **1. |**

#### **1.1. *Role of the District Policing Partnership***

Limavady District Policing Partnership was established in March 2003 with a five-fold purpose to:

- provide views to the district commander on any matter concerning policing in the district
- monitor the performance of the police in carrying out the policing plan
- obtain the views of the public about matters concerning the policing of the district
- obtain the co-operation of the public with the police in preventing crime
- act as a general forum for discussion and consultation on matters affecting the policing of the district<sup>1</sup>.

---

<sup>1</sup> Section 16, Police (NI) Act 2000

## **1.2. Demographics**

Currently, the population stands at 34,100<sup>2</sup> in 11,558 households. 51% of the population is male and 49% female. A further breakdown of the statistics reveals that 57% is Catholic and 43% non-Catholic. The age structure is above the Northern Ireland average for both school age and working age categories while less than 1% of the population from minority ethnic backgrounds<sup>3</sup>. Limavady has one of the lowest proportions of people with pensionable age (12.7%)<sup>4</sup> but with a higher than average number of 'hearing impaired' persons. The rural community accounts for approximately 63% of the population and 2.4% of farm business in N. Ireland<sup>5</sup>.

## **1.3 Environmental Scan**

As part of the District Policing Partnership's first public consultation process<sup>6</sup>, the social and environmental factors that impact upon crime and anti-social behaviour within the council district were examined<sup>7</sup>. This scan has been regularly revisited and there are no significant changes. Unemployment stands at 3%<sup>8</sup> against an N Ireland average of 4.6%. A fact file of information pertinent to Limavady Borough is attached. Appendix A.

---

<sup>2</sup> National Statistics, mid-year population figures, June 2005

<sup>3</sup> Census 2001

<sup>4</sup> National Statistics, mid-year population figures, June 2005

<sup>5</sup> Integrated Local Strategy 2003-2006

<sup>6</sup> Public Consultation Report 2003

<sup>7</sup> Code of Practice 2.8

<sup>8</sup> August 2006

## **2. Methodology**

This public consultation covers the period November 2006 to the end of September 2007 and builds upon the work of last year's consultation. In order to identify policing issues, a public consultation process was conducted, using both quantitative and qualitative research methodology. This consisted of:

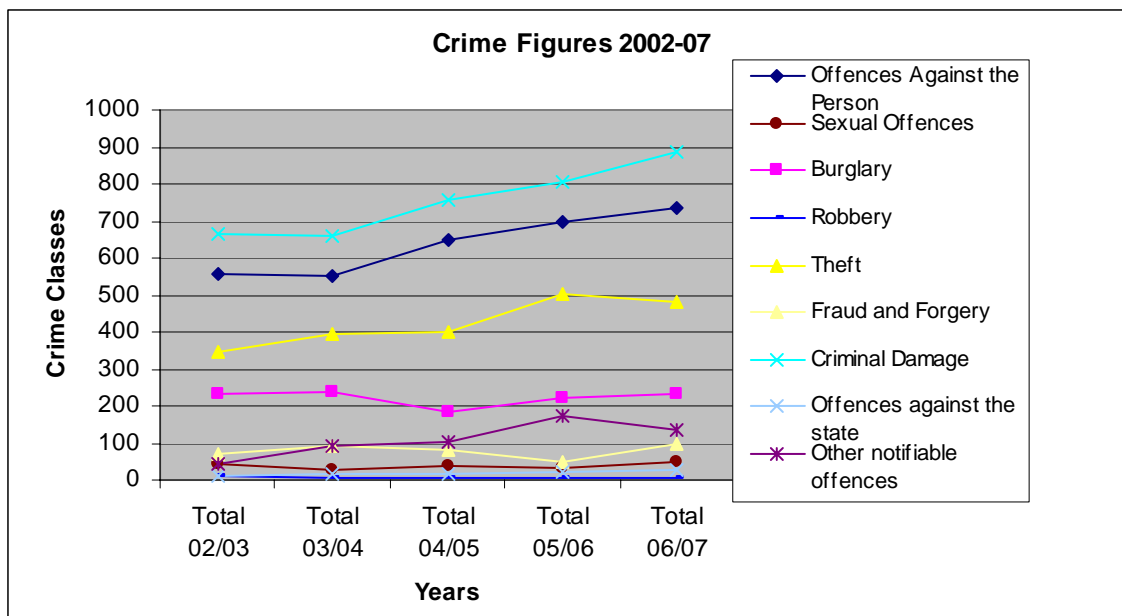
- Analysis of local crime figures
  - A primary consultation undertaken at Londonderry and Limavady Agricultural Show
  - Analysis of questions submitted by the public (i.e. type and frequency of questions received)
  - DPP input and analysis of question/issues discussed with the District Commander
  - Phone calls and visitors to the DPP office
  - Focus groups
- 
- Constraints to planned consultation include the issue that some of the consultation was planned to happen in partnership with other organisations/agencies and with certain groups. In some cases, the group took time to make a decision which has resulted in a delay of the consultation. In other instances the group has shown a reluctance to be consulted on policing issues. It was also planned to use the DPP website as a suitable way of gaining information, however, due to technical reasons this did not occur.

### 3. Key Outcomes from key stakeholders

#### Crime Analysis

Overall crime continues to rise and has risen annually since 2002/03 when the total crime figure was 1979 to 2226 in the year 2005/06. The volume of criminal damage crimes, offences against the person, theft and burglary all continue to increase. At the six-monthly assessment, the DPP notes that last year, criminal damage was holding even, but this year there is an increase of 10.6%. Clearance rates have decreased though from 18.8% to 15.8% a 3% deficit which is not encouraging. Criminal damage now accounts for 34% of all crime within the Borough, holding level to 34% last year.

This year the rate for Domestic Burglary is up 11% although clearance rates are up 4.5% from 9.5% to 13.5%. This is a decrease in last years figure which gained a 22% increase and a clearance rate of only 9% so developments are being made to combat this crime target. Unfortunately, the trend has been reversed this year, with a 22% increase in domestic burglary, and a clearance rate of only 9.0%. Burglary is a crime which strikes fear into the heart of communities and the police response coupled with clearance of these crimes does more to promote public confidence in the police than policing response to any other crime.



Offences against the person are up by 5.6% - a further increase on 2.3% compared with the previous year. Clearance rates are down from 64.3% to 40%. Violent Crime (offences against the person, sexual offences and robbery) is also on the rise, an increase of 58 cases from this time last year. Clearance figures reflect an decrease to 38.7%.

Theft accounts for 18% of all crime, with the high volume thefts being the opportunistic Burglary. The clearance rate has decreased from 24.1% to 21.2%. Vehicle Crime (theft from motor vehicles and theft or unauthorized taking of motor

vehicles) continues to account for a relatively small percentage of all crime in Limavady with no increase in theft from motor vehicles (same as last year, a total of 87 incidents).

Drug trafficking offences have decreased slightly (20 recorded offences compared with 22 in the previous year a total decrease of 9%), while non-trafficking offences have decreased from 94 to 68, a more significant decrease of 27%. The DPP continues to commend the police for their proactive approach in disrupting the drugs supply chain. This still is an area for concern that these figures represent a significant availability of drugs within our Borough. The DPP will continue to keep this a live issue and will work in partnership with all relevant bodies to tackle this problem with an education, prevention and enforcement perspective.

### **3.1. Questionnaires**

The Londonderry and Limavady Agricultural Show provided a perfect medium to conduct one-on-one interviews with a wide range of people from differing parts of the Borough, age ranges, occupations and from both genders. 6 questionnaires were completed. While an on-line questionnaire is included on the DPP website, there has been non response to this, which is something that will need to be examined for viability for the incoming year.

It was noted that while information generated represented the Borough in terms of gender, age and religion that it is based on people's perceptions and represent general ideas and opinions.

<b>Gender</b>	<b>M</b>	<b>F</b>
Total	3	3
<b>Age Range</b>	<b>Total</b>	
<20		
20-30		
31-40		
41-50		
51-60	1	
61+		
<b>Total</b>		

One person answered this question

<b>Q1 Last 2 years, the DPP stated these were the main policing priorities. Please rank these priorities now with 1 = biggest problem. 3= least</b>			
	<b>1st</b>	<b>2nd</b>	<b>3rd</b>
Alcohol related crime at weekends	2 people		
Anti-social behaviour	1		
Criminal damage	1		
Drug Dealing			
Drug Use			
Fear of rural crime			
Offences against the person	1		
Road traffic issues			
Theft	1		
Youths causing annoyance			

<b>Q2 Last year, the DPP stated these were the main policing standards. What do you consider are the main policing standards? Please rank</b>			
	<b>1st</b>	<b>2nd</b>	<b>3rd</b>
Courteous	3 persons		
Problem Solving	1		
Providing Feedback			
Providing reassurance	2		
Responsive			
Other standard			

<b>Q3 Last year, the DPP stated these were the main policing practices. What do you consider are the main policing practices? Please rank</b>			
	<b>1st</b>	<b>2nd</b>	<b>3rd</b>
Beat/foot patrolling	2		
High visibility policing	3		
Investigating crime	1		
Other practice			

<b>Q4 What do you think is the chief role of the community police? Please rank.</b>			
	<b>1<sup>st</sup></b>	<b>2nd</b>	<b>3rd</b>
Increased involvement with young people	3		
Improving community relations	2		
Working in partnership with other agencies	1		
Other practice - Deterrent			
Other practice – creating confidence			

<b>Q5 Have you had contact with the police in the last year?</b>	
Yes	3
No	3

Q5 If yes, how satisfied were you with the way you were treated?				
Very satisfied	Satisfied	neither	Dissatisfied	Very dissatisfied
2				

One person did not answer.

Q6 If you reported a crime to the police in the last 12 months, were you?		
	Yes	No
Provided with a unique reference number?		2
Satisfied with the manner in which the report was received?		
Provided with feedback?		
Satisfied with the content of the feedback?		
Satisfied with the manner in which the feedback was given?		

Top issues identified were drug dealing, offences against the person, criminal damage and Theft. People expect the police to be courteous, problem solve and provide reassurance. It was suggested that the primary role of the community police should be increased involvement with young people which will help tackle the Anti-Social behaviour problems in the Limavady area

### 3.2. *Limavady Community Forum*

A focus group consultation was held with the Limavady Community Forum on the 14<sup>th</sup> of February 2007. Approximately 9 people participated. Some participants gave several views to the one question. The following questions were asked and the main synopsis is as follows.

#### **What are the policing priorities in the area?**

- Issues around misuse of drink and drugs.
- Antisocial behaviour and vandalism often related to alcohol misuse.
- Speeding drivers – young ‘racers’.
- Not much else for young people to do. Need more organised activities.
- Robberies are a problem in rural areas. Mainly farm equipment, trailers and quads for example.
- We know of 4 houses broken into in Limavady recently. The thieves took garden furniture and paintings. It seems to be organised crime.
- When crimes are reported it seems that nothing happens as a result. There is very little follow-up.

- Some young people broke into one community house. The group had to install an alarm.

## **Are there police officers out and about in your area?**

### **Are they visible?**

### **When do you see them?**

- We don't see them a lot. They are rarely seen in Feeny.
- We do see them in Limavady on bicycles and walking too.
- I see them about in marked cars. For a while there wasn't many but in the last 10 days there has been an increase.
- People prefer to see the police in marked cars especially in rural areas.
- It is necessary to have law and order in every society.
- Police being seen out and about acts as a deterrent.
- We see them more during the day. They are neither as visible nor noticeable in the evening.
- It is not evident that they are about late at night but they should be. Their presence would have an impact on the levels of antisocial behaviour.
- We would like to see them on bicycles and walking.
- Community beat police officers are a positive step.
- Haven't seen any on bicycles in Dungiven.
- It could be tough to build relationships in Dungiven.

## **What is your experience of dealing with the police?**

### **Has this experience improved or got worse?**

### **What do you expect when dealing with the PSNI?**

- During the troubles when I was going to Mass they would delay us. There is a need to build a relationship with local people.
- My relative's house in Belfast was broken into and they were very courteous.
- My sister experienced a break in and they were very helpful.
- If an area is a known trouble spot, why do they not visit the area uninvited?
- In Feeny, the PSNI were called when cars were rallying about but they said it wasn't worth their while to come out from Limavady. No visible presence of police in the area.
- In Dungiven on a Sunday evening I have noticed a continual *tour* of town by young drivers. Generally making a nuisance of themselves. The police should deal with this.
- You don't get 'feedback' from police. They never come back and tell you what has happened as a result of your reporting.
- We did get feedback and they made several visits to make sure we were OK. (another participant).
- We got no help after a second break-in at the community centre. We never heard if there was anyone caught. Following the first break-in they were quick to come out and afterwards crime prevention officers came to see us. The second time they were slow to come out because there was only one police car in the whole area and they were over an hour away when they got our call.

## How could things be improved?

- Less policemen sitting in cars and more out on the beat.
- It feels like they aim for soft targets.
- Maybe when they do catch people the person seems to get off very lightly. The judicial system really needs improved.
- Prefer to see them in marked cars.
- They could come in and visit community centres uninvited and start to talk to people. This would be welcomed in some areas.
- Occasionally they call in with us if there has been an incident in the locality.
- Police clinics have been set-up in Limavady and they seem to be working very well.
- Through Interagency work in Limavady the PSNI have offered limited financial assistance to some groups. This hasn't happened in rural areas as yet.
- You need reassurance that they have taken your issue on board.
- The Sinn Fein decision to support police will have an impact on the way the nationalist community connects with the police.
- Before, in some areas, people would have been anxious and uncertain about talking to the police. There would even have been a sense of perceived collusion if you were seen talking to the police.
- We need a police service that is open and transparent.

### 3.3. *Safer Roads Consultation*

During the year 2005-06 the top issue identified by the rural community was that of road traffic management, this included boy racers, improper use of quad bikes, speeding, people driving without a driving licence and insurance. In response a themed meeting on Safer Roads were organised and the meeting was promoted through a range of marketing tools, including the use of a special effects car placed in Dungiven Main Street on the 7<sup>th</sup> September and Limavady Main Street on the 8<sup>th</sup> September. Members of the DPP assisted in the distribution of flyers and the questionnaire was used as basis to generate discussion and gather information.

In Dungiven, the atmosphere was one of interest, curiosity and a willingness to engage. Conversations were in depth and people were willing without any prompting to discuss local issues.

Issues identified in Dungiven were:

- Underage drinking – Dungiven Castle area and Station Road
- Continued boy racer activities, although this had improved in recent months

- Drink/drug driving and the need for testing for drug driving
- Awareness of a culture of driving without a valid driving licence or relevant insurance
- Anti-social behaviour – primarily around the Castle and Main street in association with closing times at weekend
- Lack of policing, especially at twilight hours
- Continued speeding outside the 30 mph limits on the Garvagh Road and Foreglen Roads
- Unlicensed taxis operating within Limavady
- The issue of quad bikes has abated

Issues identified in Limavady were:

- Speeding in the Roemill Road area
- Abuse of parking bays/loading bays
- Parking on corners, in particular at bottom end of Market Street
- Perception that folk are driving without insurance
- A need to reduce the overall speed limit

#### **3.4. *Public Survey to Monitor Awareness perception associated with, and impact of the change in Dungiven Police Station to 'Lock and return' status.***

The survey involved monthly telephone contact with each of ten local people from the Dungiven area. The composition of this group and the survey questions were agreed with the Limavady DPP Manager.

The individuals in the sample were recruited by the researchers using a range of local contacts to arrive at a sample to reflect the discussions with the DPP Manager. As agreed, the survey sample comprised representation from the:

- business sector;
- community sector;
- farming sector;

- statutory sector;
- faith sector.

The sample included members from both the main communities in the Dungiven area. It was agreed that the individuals within the sample would remain anonymous.

The survey question areas explored during each monthly telephone interview were as follows:

- awareness / perceptions of change in PSNI patrol levels over the month preceding each telephone interview;
- identification of particular times of the day when patrols were observed;
- perceived changes in the levels of crime in the local area;
- perceived changes in the level of fear of crime;
- changes in the experience of using local PSNI services or any change in the reporting of crime;
- Perceived changes in the relationship between the community and the PSNI.

### **3.1 Question 1: Awareness / perception of any change in PSNI patrol levels in the local area over the preceding month**

.

#### **Question 1 - key points emerging**

- Police Officers most frequently noticed in marked Police cars in Dungiven, mostly on traffic duties.
  - Interviewees report more frequent sightings of Police cars as the survey progressed month by month.
    - Few sightings of Police Officers on foot in the town overall.
- One individual expressed concern regarding licensed premises incident when arrests were made (*February 2007*).
- One individual reported a more relaxed atmosphere as regards policing in the Dungiven area (*April 2007*).

### **3.2 Question 2: Particular times of the day when patrols are witnessed**

#### **Question 2 - key points emerging**

- No particular pattern to timing of day-to-day observations of Police presence in and around Dungiven emerging from this sample.
- Evidence of increased sightings during April – all respondents had witnessed PSNI patrols or other activity.
- Individual respondent commented on the need for a more visible Police presence in the area (*January 2007*).
- In April, first reference to the Police Station in that it '*looked deserted*' according to a single respondent.

### **3.3 Question 3: Perceptions of change in crime levels in the local area**

#### **Question 3 - key points emerging**

- No awareness / perception of change in the level of crime reported over the course of the survey.
- Emerging concerns in relation to antisocial behaviour during April 2007.

### **3.4 Question 4: Awareness / perceptions of change in the level of fear of crime**

#### **Question 4 - key points emerging**

- No significant change in levels of fear of crime observed by this sample of people over the course of the survey.
- One or two interviewees voiced concern in relation to the change in status of the Police Station in terms the impact of this on the of fear of crime but most did not.
- Fear of crime continues to be an issue for older vulnerable people in particular.
- Comments include a practical suggestion for easing communication to Limavady Police Station from Dungiven.

- New climate for Policing acknowledged by one interviewee.

### **3.5 Question 5: Awareness / perceptions of change in the experience of using local PSNI services or any change in the reporting of crime**

#### **Question 5 - key points emerging**

- Political barriers to using Police services in the Dungiven area noted.
  - Positive and negative examples of using Police services provided.
- Practicalities of having to contact / travel to Limavady Police Station highlighted.
- Local awareness of change of status of Dungiven Police Station questioned.
  - Need for improved communication with Limavady Station via Dungiven suggested – e.g. telephone link from Dungiven number or recorded message to signpost the caller.
- Little change in relation to the experience of using PSNI services over the duration of the survey, or attributable to the change in status of Dungiven Police Station.

### **3.6 Question 6: Any changes in the relationship between the community and the PSNI**

#### **Question 6 - key points emerging**

- Gradual improvement in Police – community relations noted overall during the lifetime of the survey.
- Changing political climate acknowledged as the driver for change in Police – community relations.
- Continuing challenges in terms of building Police-community relations noted.
- More proactive approach required to further build relations including increased local profile for PSNI and Community Police Officers working '*on the ground*' in the area.

- No discernable impact on Police – community relations attributable to the change in status of Dungiven Police Station, based on this survey sample – more significant factors at play – historical, political.

Overall, according to the survey, this change appeared to be having little impact for local people on key issues such as:

- awareness / perceptions of PSNI patrol levels and timing of these;
- perceptions of the levels of crime in the local Dungiven area;
- perceptions in the levels of fear of crime;
- experience of using PSNI services and reporting crime;
- the relationship between the community and the PSNI.

### **3.5. *Other stakeholder meetings***

During the year, the DPP Manager has met with groups/organisations to in order to inform them of the work of the District Policing Partnership and to identify their policing issues and priorities. These have included among others Dungiven Women's Institute, Probus, Drummond Senior Citizens. One to one interviews have also taken place with representatives of the Voluntary and Community Sector, including various community association members and representatives from Verbal Arts, HURT, ZEST, CHILL and the Community Drugs team. Information generated confirmed information from other sources, primarily, the issue of road traffic management in the rural areas, drug dealing/abuse within Limavady town, with the general issue of criminal damage and youths causing annoyance.

### **3.6. *Questions from the public***

A summary of questions raised from the public through the DPP process were collated. Due to the fact that themed meetings are held, only questions raised at quarterly meetings are included in the analysis. From the subjects raised, the main

issues of anti-social behaviour, alcohol abuse and related crime, public nuisance, road traffic issues and societal issues were identified.

	Written questions	Questions from the floor	Written questions	Questions from the floor
	2004-2005 (til Nov)	2004-2005 (til November)	2005-2006 (til Nov)	2005-2006 (til November)
Total	25	Cannot be defined		Cannot be defined
Drugs	3	+		+
Alcohol Abuse	3	++		+
Theft	1	++	1 (disabled parking bays)	++ (Business)
Public Nuisance	8	++++		++
Violence	4	+++		+
Policing Practices	1	++		++
Societal issues	4	++		++
Others to DPP				+

### **3.7. Phone calls and visitors to DPP Office**

A record of phone calls and visitors to the DPP Office reflect that the key issues identified are:

- Anti-social behaviour
- Criminal damage
- The length of time the telephone rings in the Station prior to receiving an answer
- Youths Causing Annoyance

### **3.8. Questions/discussion between the DPP and the police**

Analysis of the minutes, reflect that discussion have centred around:

General issues:

- Continued commendation for disrupting the drug supply chain
- Commendation for increased visibility and for the need to sustain this

- Need for community policing to remain a core service and for the community to have access to Community Policing Services
- The need for use existing staff effectively and concern that Limavady has a lack of adequate part-time officers
- The need to factor-in issues identified through the DPP, local media etc to compensate for areas where traditionally there is not a reporting habit and therefore not included in hotspot patrolling.
- Public confidence is promoted by providing feedback and crime detection
- The need for positive customer relations both in telephone and personal contact between the public and the police
- Need for multi-agency approach to local issues
- Responsiveness to issues raised by the DPP

#### Identified Policing Issues

- Alcohol related crime and issues associated with the night-time economy
- Underage drinking/on street drinking
- Road safety issues
- Domestic Violence
- Criminal Damage
- Youths causing annoyance and anti-social behaviour
- Business Crime
- Need to focus on problems issues, areas and estates

## 4. Tabulation of outcomes

Information was tabulated in matrix form, which listed the issues identified in list of ranking. This format provided an opportunity to demonstrate the close relationship between fact and perception.

Categories	Crime Stats 1/04/05– 30/09/06	NISRA survey 2006	Questions from Public at Meetings in Public	Focus groups, Questionnaires	Discussion from DPP at Meetings with Police	Phone calls to office	Media scanning	Economic Dev elopement Audit /Good Relations Consultation
Youths causing annoyance		4	Criminal	Youths causing annoyance/ Criminal	Youths causing annoyance/ Criminal Damage/ ASBehaviour - 2		Criminal damage/Vandali sm, Graffiti	
Criminal Damage	434 - 1	5	Damage/public nuisance - 1	Damage/ ASBehaviour – 1		Criminal Damage /ASBehaviour = 2		
Offences against the Person *a	364 - 2				Domestic Violence			
Thefts	224 3						Mobiles phones, Bicycles Tools	Business Crime
Vehicle Crime (Includes Theft of Vehicle & Theft From Vehicle)	62							
Burglary (Total)	124 - 4							
(Domestic Burglary)	55	Dom - 7						

Categories	Crime Stats 1/04/05– 30/09/06	NISRA survey 2006	Questions from Public at Meetings in Public	Focus groups, Questionnaires	Discussion from DPP at Meetings with Police	Phone calls to office	Media scanning	Economic elopement /Good Relations Consultation	Dev Audit
Other Notifiable Offences (includes drug and road traffic offences *c	68 - 5	Roads - 1 Drugs Dealing – 2 Drug Use - 6	Drugs	Roads – Rural 1 Drugs – Limavady 1	Road Traffic Issues - 3		No driving licence/ insurance/spe eding. Drugs dealing and possession		
Alcohol issues		Underage drinking - 3	Issues associated with night time economy – 1		Related to night time economy. Underage drinking/on street drinking - 1		Drinking in public place		
Fraud/Forgery *b	43 - 6		Business Crime 2					Business Crime	
Sexual Offences	21 - 7								
Policing Practices			High Visibility required = 3	High visibility policing. Foot patrol.	Investigating crime. Crime prevention				

#### Notes

\*a – Offences under this heading include Murder, Manslaughter, Assaults, Abduction, Bomb Scares, Sexual Offences and Firearm Offences

\*b – Examples includes multiple credit card and cheque book offences and persons using false or bogus names and addresses

\*c - Offences under this heading include Blackmail, Dangerous Driving, Kidnapping, False Imprisonment, Drug Offences, Betting, Gaming and Lotteries, Libel, Perjury and other indictable or triable either way offences

## 5. Conclusion

As a result of the public consultation process, policing priorities were identified. It was acknowledged that not all the issues were for inclusion in the policing plan, some required local monitoring, or to be considered as training needs. The District Policing Partnership emphasised the need for adequate resources in terms of personnel and finance and it has been stressed that for the police to do their duties they require the full support of the community within which they work.

## POLICING PLAN

### Staffing Levels

It is still a huge area for concern that Limavady only has 4 Community Police Officers compared to other areas within the G district.

#### 1. Policing Priorities.

- **The Volume Crimes** of criminal damage, offences against the person, and theft need to be given continued attention – both to prevention and resolution.
- **Drug-related activities** continue to be of particular concern, legal and illegal; both drug dealing and drug use. While the top policing issue identified from those in Limavady town area is drug dealing/use, the top local issue is that of anti-social behaviour and criminal damage.
- **Alcohol abuse, alcohol related crime and underage drinking.** Byelaws relating to the consumption of intoxicating liquor in public places should be fully implemented. It was acknowledged that this requires an educational input and multi-agency approach.
- **Road Traffic Management.** This is still a key issue – both dangerous/careless driving and speeding, coupled with a perceived local culture of driving with no driving license or insurance in particular within rural areas.
- **Domestic Violence.** Domestic Violence continues to be an area of concern. A proactive investigatory approach should seek to address the increase in the number of violent domestic offences. A base line figure for 06/07 has now been established, so development and strategic steps can now be implemented to help combat this type of crime with the area.
- **Emotive issues: Public Nuisance Issues.** Youths causing annoyance and low level anti-social behaviour, have been identified as a top issue identified by local communities for their area. While these require a multi-

agency approach to tackle societal issues, enforcement of relevant legislation is encouraged, including exploration of using Acceptable Behaviour Contracts and ASBOs.

2. **Fear and Perception of Crime.** Fear of Crime exists both in the rural areas and in the towns. It is acknowledged that people have a fear of burglary (particularly in the rural areas) and of a growing drug culture, even though statistically this is not confirmed. The police are encouraged (in partnership where necessary) to proactively use a crime prevention and educational approach to address these fears.
3. **Crime Prevention.** Crime Prevention is a core activity of the police.
4. **Policing with the Community.** Policing with the Community remains a core activity and the expansion of the Community Policing Team has been welcomed by communities. The concept of policing clinics in each community area is recommended and is currently under review to be implemented. It is important that the rural community feels that they have access to community policing.
5. **Customer Relations.** Local people have an increased confidence and higher than average satisfaction level with the police (based on the NISRA 2004 vs 2003 survey). However, comments received indicate that the answering of telephone and telephone manner and responses could be drastically improved.
6. **Promotion of Public Confidence is paramount.** Public confidence is promoted by providing feedback and crime detection. The continued practice of providing feedback to callers is encouraged.
7. **Targets**  
It would be preferable to continue to improve on targets set previously'?
8. **Policing Plan 2005-06.** During the first six months of 2005-06, Limavady DCU continues to perform well against targets compared with other DCUs in the region and province-wide. Crime levels for the first time since the inception of the DPP are holding even, with only minimal increases in a few classes of crime. In recent weeks (October/November 2006) there has been recovery of stolen property, seizures of fireworks, contrabrand materials and drugs which has lead to a number of persons arrested and charged. This is to be commended.
9. **Staffing levels.** It was with disappointment that in November 2005 the community policing team was reduced in size and it is anticipated that the

imminent move for Dungiven Station to become 'lock and leave' status will provide an opportunity to provide an enhanced, community focused, problem solving policing to this area. The DCU would benefit from the added value of part-time police officers and the proposed police community support officers.

### **1 Policing Priorities.**

- The **Volume Crimes** of criminal damage, offences against the person, and theft need to be given continued attention – both to prevention and resolution.
- **Drug related activities** continue to be of particular concern, legal and illegal; both drug dealing and drug use. While the top policing issue identified from those in Limavady town area is drug dealing, the top local issue is that of anti-social behaviour and criminal damage. There is still a need to focus on disrupting the drug supply chain. There remains the necessity for a baseline survey to identify the extent of drug use within the Borough.
- **Alcohol abuse, drinking in public places, and underage drinking.** Byelaws relating to the consumption of drinking intoxicating liquor in public places should be fully implemented as should checking for infringements of licensing regulations. Continued work with the Vintners Association, local licensees and the support of the 'Behave or be Banned' programme is recommended. It is acknowledged that this requires an educational input and multi-agency approach.
- **Road Policing Management.** Speeding, 'boy racer' activities are the top concerns in rural areas although this situation has improved during the year. Attention to road policing management needs to be continued, especially to speeding offences by 'boy racers', those who drive while under the influence of drink/drugs, do not have driving licences or insurance, or fail to wear seat belts.

- **Domestic Violence.** Domestic Violence incidents and especially those involving violence continues to be an area of concern. The area of violence between children and between children and their guardians has been raised. While this is not an issue statistically, it merits further research by the relevant agencies. A proactive investigatory approach is already impacting on violent domestic offences.
- **Emotive issues: Public Nuisance Issues.** Youths causing annoyance, low level anti-social behaviour has been identified as a growing issue and now the top issue identified by local communities for their area. A multi-agency approach is required to tackle societal issues and enforcement of relevant legislation is encouraged, including further use of Youth Diversion and consideration of using Restorative Cautions, Acceptable Behaviour Contracts and ASBOs.

10. **Fear and Perception of Crime.** Fear of Crime exists primarily in the rural areas. It is acknowledged that people have a fear of burglary (particularly in the rural areas) and of a growing drug culture and do not want issues e.g 'attacks against the elderly' occurring in Limavady. The police are encouraged (in partnership where necessary) to proactively use a crime prevention and educational approach to address these fears.

11. **Crime Prevention.** Crime Prevention is a core activity of the police.

12. **Policing with the Community.** Policing with the Community remains a core activity and the need to maintain the Community Policing Team to serve the main towns within the Borough is essential, in particular to ensure that the Dungiven area has an enhanced policing service. The concept of policing clinics in each community area is recommended. It is important that the rural community feels that they have access to community policing as recommended in the Patten Report.

13. **Customer Relations.** Local people continue to have an increasing confidence in the police. Negative comments relate around the issues of customer relations and telephone manner. The need to provide all callers with reference numbers would further improve public confidence.

**14. Promotion of Public Confidence is paramount.** Public confidence is promoted by providing feedback and crime detection. The continued practice of providing feedback to callers is to be promoted.

**15. Hot-spot patrolling**

Hot-spot patrolling is based on data collection and there is a need to factor in areas who do not traditionally report incidents to the police. Information passed through both the DPP and through media coverage should be used to identify hot spot areas.

**16. Targets**

Since the implementation of the DPP, identified priorities have not changed and in order to have comparable data, it would therefore be preferable to have some targets that have previously been used, with a focus on issues that have been clearly articulated during the year e.g. youth crime and anti-social behavior and targets relating to ensuring that customer service is paramount.

It is hoped that the contents of this report will assist the District Commander with formulating the local policing plan. The District Commander is encouraged to use the information contained within. It is also acknowledged that this information will complement other information collated from different sources.

Consideration should be given to using the local policing plan to reflect commitments made between the Police and the DPP e.g. providing feedback to all callers.

**Appendix A Setting the context:**

## THE Limavady FACTBOXES

### Limavady Factbox: How Many of Us Are There?

Limavady District

<i>1991</i>	<i>2001</i>	<i>2003</i>	<i>2004</i>	<i>2017</i>
29,567	32,422	33,571	34,010	37,761

- Increase 1991 to 2001 = 2,855
- Increase 2001 to 2004 = 1,588
- Increase 1991 to 2017 = 8,194
- Increase 2001 to 2017 = 5,339

	<i>NI</i>	<i>LDC</i>
Working age population (2002)	982,000	20,000
Unemployed (August 2006)		
<b>Total</b>	<b>4.1%</b>	<b>2.8%</b>

# Limavady Factbox: The World of Business and Education

There are 1,065 VAT registered businesses in the Limavady Borough Council area employing a total of 8,178 people.

The main business sectors are detailed below:

SECTOR	BUSINESS
	%
Agriculture/Forestry	4.3
Construction	15.0
Wholesale/Retail	13.5
Manufacturing	16.3

- Unemployment stands at 3% (August 06) against ward based unemployment ranks from 1.4% in Magilligan to 6% in Greystone and 4.6% for Northern Ireland
- Limavady ranks at number 6 out of 26 in terms of unemployment (where 1 has the highest level of unemployment and 26 has the lowest)
- 62% of the population are economically active, this is in line with the Northern Ireland average.
- 98.6% of our enterprises are classified as small(<50 employees)
- 10% of our people go on to achieve a degree/higher level qualification against 15% for Northern Ireland
- 53% of our school leavers gained 5 or more GCSE's at grade C or above against 59% for Northern Ireland
- 61% of school leavers continue to higher education ....on a par with Northern Ireland
- Income Support, Incapacity Benefit and Housing Benefit are claimed at the same rate as across Northern Ireland

## Limavady Factbox: Housing

### HOUSING

	<i>LIMAVADY</i>	<i>N IRELAND</i>
Owner Occupied	70	69
Rented	30	31

New dwelling starts 2004 - 346

- 24.8% of housing is terraced
- 4.1% of housing are apartments
- 24.2% of housing is semi-detached
- 46.9% of housing is detached
- The average house price is 18% less than the norm for the rest of Northern Ireland

## Limavady Factbox: Dependents

WARD	% OF YOUNG PEOPLE AGED UNDER 16	% OF PEOPLE AGED 60+
Aghanaloo	29.2	9.1
Ballykelly	24.7	15
Coolessan	25.2	13.6
Dungiven	28.8	13.4
Enagh	29.3	12.2
Feeny	29.3	11.4
Forest	27.7	11.2
Glack	22.7	15.7
Gresteel	27.7	7.9
Greystone	26.0	16.4
Magilligan	17.8	17.5
Rathbrady	18.1	18.6
Roeside	12.9	30.8
The Highlands	25.3	14.8
Upper Glenshane	27.7	11.9

## Limavady Factbox: Miscellaneous

<input checked="" type="checkbox"/>	11% of the adult population is on some sort of disability benefit
<input checked="" type="checkbox"/>	at least 19% of people have a long-term illness
<input checked="" type="checkbox"/>	a quarter-to-a-third of the adult population smoke
<input checked="" type="checkbox"/>	17% of the Limavady population live in the most deprived Super Output Areas in Northern Ireland
<input checked="" type="checkbox"/>	at the 2001 Census, 57% of the population was Catholic; 42% Protestant and 1% None/Not Stated
<input checked="" type="checkbox"/>	births exceed deaths by about 205 last year
<input checked="" type="checkbox"/>	0.8% of Limavady population are from ethnic minorities

## Limavady Factbox: How does this compare?

Percentage Comparison	Limavady	Strabane	Magherafelt	Derry	Proposed 'Super Council'	N. Ireland
Percentages						
<b>Under 16</b>	26	26	26	27	26	24
<b>Over 60</b>	14	16	15	14	15	18
<b>Male</b>	51	50	50	49	50	49
<b>Female</b>	49	50	50	51	50	51
<b>Catholic</b>	57	66	64	75	65	44
<b>Protestant and Other</b>	41	33	35	23	33	53
<b>Limiting long-term illness</b>	19	23	19	22	21	20
<b>Providing unpaid care</b>	9	10	10	11	10	11
<b>Households owner-occupied</b>	70	67	76	61	69	70
<b>Access to a car or van</b>	78	74	82	67	75	74
<b>Degree or higher</b>	10	9	13	15	12	16
<b>Unemployed</b>	3	5	2	6	4	4

As supplied by Venture Organisation to Limavady Borough Council September 2006

Limavady District Policing Partnership actively seeks views on issues relating to policing. The DPP can be contacted via email at [dpp@limavady.gov.uk](mailto:dpp@limavady.gov.uk) or by writing to:

Limavady District Policing Partnership  
7 Connell Street  
LIMAVADY  
BT49 OHA.

Tel: 028 777 60314

Copies of this publication and other publications in association with the Freedom of Information Act are available from the DPP offices and are available on the web site: [www.districtpolicing.com/limavady](http://www.districtpolicing.com/limavady)